

1

♠K8
♥K975
♦A1053
♣965

♠Q10763
♥AJ103
♦K
♣J73

♠92
♥Q62
♦J9742
♣K104

♠AJ54
♥84
♦Q86
♣AQ82

2

♠AQ3
♥AK8
♦K6
♣107643

♠J1074
♥5
♦5432
♣AKJ8

♠92
♥QJ972
♦AQJ97
♣2

♠K865
♥10643
♦108
♣Q95

3

♠85
♥K1098
♦98754
♣95

♠KQ4
♥QJ5
♦KQ3
♣K742

♠976
♥A432
♦A62
♣QJ3

♠AJ1032
♥76
♦J10
♣A1086

Board (1) Av: NS=+150

Board (2) Av: NS=-130

Board (3) Av: NS=-470

N-S	E-W	Contract	L	N-S	E-W	IMP	N-S	E-W	Contract	L	N-S	E-W	IMP	N-S	E-W	IMP			
1	50	1NT	N 2 D4	120		-1	1	50	1NT	N-1 HQ	100		1	50	3NT	W 3 S8	600	-4	
50	1	2Dx	E-4 H9	800		12	50	1	3D	E 5 S6	150		50	1	3NT	W 3 HT	600	-4	
2	10	2NT	S 2 HT	120		-1	2	10	2D	E 5 DT	150		-1	2	10	3NT	W-1 S8	100	11
10	2	1NT	S 2 S2	120		-1	10	2	2D	E 5 DT	150		-1	10	2	3NT	W 3 S8	600	-4
3	4	2NT	N 3 D4	150		0	3	4	2D	E 6 DT	170		-1	3	4	3NT	W 3 S8	600	-4
4	3	1NT	N 2 HJ	120		-1	4	3	2D	E 5 DT	150		-1	4	3	3NT	W 3 S9	600	-4
5	28	3NT	S-1 HJ		50	-5	5	28	2D	E 5 C5	150		-1	5	28	3NT	W 3 C9	600	-4
28	5	1NT	S 3 D7	150		0	28	5	2D	E 5 D8	150		-1	28	5	3NT	E 3 S8	600	-4
6	39	1NT	N 2 C2	120		-1	6	39	3D	E 5 C2	150		-1	6	39	3NT	E 3 S8	600	-4
39	6	1NT	S 3 D6	150		0	39	6	3D	E 5 C6	150		-1	39	6	3NT	W 3 S8	600	-4
7	12	1NT	N 2 D4	120		-1	7	12	2D	E 4 DT	130		0	7	12	3NT	W 3 S8	600	-4
12	7	1NT	S 3 S3	150		0	12	7	3D	E 5 DT	150		-1	12	7	3NT	W 3 S8	600	-4
8	25	2NT	S 3 S6	150		0	8	25	2D	E 6 DT	170		-1	8	25	3NT	W 3 HT	600	-4
25	8	1NT	S 4 C2	180		1	25	8	2D	W 6 DT	170		-1	25	8	3NT	W 3 S8	600	-4
9	24	1NT	S 2 S5	120		-1	9	24	2D	E 6 DT	170		-1	9	24	3NT	W 3 HT	600	-4
24	9	3NT	N 3 D2	400		6	24	9	2D	E 5 DT	150		-1	24	9	3NT	W 3 HT	600	-4
11	33	1NT	S 1 S6	90		-2	11	33	2D	E 5 DT	150		-1	11	33	3NT	W-1 S8	100	11
33	11	2H	E-3 H4	150		0	33	11	3D	E 5 S6	150		-1	33	11	3NT	E 3 ST	600	-4
13	34	1NT	S 3 C3	150		0	13	34	2D	E 5 C3	150		-1	13	34	3NT	W-1 H6	100	11
34	13	1NTx	E-3 D6	500		8	34	13	2S	S-1 H5	100		1	34	13	3NT	W-2 S8	200	12
14	29	2NT	S 2 S6	120		-1	14	29	3D	E 5 C2	150		-1	14	29	3NT	W 3 D9	600	-4
29	14	1NT	S 3 S6	150		0	29	14	2D	E 4 S6	130		0	29	14	3NT	W 3 S8	600	-4
15	42	1NT	S 2 S6	120		-1	15	42	3D	E 4 DT	130		0	15	42	3NT	W-1 S8	100	11
42	15	1NT	S 3 S6	150		0	42	15	3D	E 5 C5	150		-1	42	15	3NT	W 3 HT	600	-4
16	23	1NT	E-3 C2	150		0	16	23	1NT	N-1 DQ	100		1	16	23	3NT	W-1 D9	100	11
23	16	1NT	S 3 S6	150		0	23	16	3D	E 5 C5	150		-1	23	16	3NT	W 3 HT	600	-4
17	27	1NT	S 1 S6	90		-2	17	27	1NT	N 1 DA	90		6	17	27	3NT	W 3 HT	600	-4
27	17	1NT	S 1 S6	90		-2	27	17	3D	E 5 DT	150		-1	27	17	3NT	W-2 S8	200	12
18	21	1NT	S 2 S6	120		-1	18	21	1NT	N-1 S9	100		1	18	21	3NT	W 3 H8	600	-4
21	18	1NT	S 1 HJ	90		-2	21	18	3D	E 4 DT	130		0	21	18	3NT	W 3 S8	600	-4
19	48	1NT	S 2 S6	120		-1	19	48	5D	E-1 S6	50		5	19	48	3NT	W 3 S8	600	-4
48	19	2NT	S-2 HJ		100	-6	48	19	2D	E 6 DT	170		-1	48	19	3NT	W 3 HT	600	-4
20	35	1NT	S 1 S6	90		-2	20	35	3D	E 5 C5	150		-1	20	35	3NT	W 3 HT	600	-4
35	20	1NT	S 3 S6	150		0	35	20	2D	E 4 C5	130		0	35	20	3NT	E 3 S8	600	-4
26	45	1NT	S 1 H3	90		-2	26	45	3D	E 4 S6	130		0	26	45	3NT	W 3 H9	600	-4
45	26	1NT	S 2 S5	120		-1	45	26	3D	E 4 S6	130		0	45	26	3NT	W 3 HT	600	-4
30	36	1NT	S 4 S6	180		1	30	36	1NT	N-1 DQ	100		1	30	36	3NT	W-1 D5	100	11
36	30	1NT	S 1 HJ	90		-2	36	30	2D	E 5 C5	150		-1	36	30	3NT	W-2 S8	200	12
31	46	1NT	S 2 S6	120		-1	31	46	3D	E 5 C5	150		-1	31	46	3NT	W 3 S8	600	-4
46	31	1NT	S 1 S6	90		-2	46	31	2H	E-2 DT	100		6	46	31	3NT	W 3 D9	600	-4
32	52	1NT	S 2 S6	120		-1	32	52	2D	E 4 C5	130		0	32	52	3NT	W-1 D6	100	11
52	32	1NT	S 2 S4	120		-1	52	32	2S	W-1 HA	50		5	52	32	3NT	W 3 HT	600	-4
37	53	2S	W-3 C5	150		0	37	53	3D	E 4 DT	130		0	37	53	3NT	W 3 HT	600	-4
53	37	2NT	S 3 S6	150		0	53	37	3D	E 4 S6	130		0	53	37	3NT	W 3 S8	600	-4
38	44	1NT	S 3 S5	150		0	38	44	2D	E 5 S5	150		-1	38	44	3NT	W 3 HT	600	-4
44	38	1NT	S 3 S6	150		0	44	38	3C	N-2 HQ	200		-2	44	38	3NT	W 3 S8	600	-4
40	49	1NT	S 3 S6	150		0	40	49	3D	E 4 C5	130		0	40	49	3NT	W 3 HT	600	-4
49	40	1NT	S 2 H3	120		-1	49	40	2D	E 4 S6	130		0	49	40	3NT	W 3 HT	600	-4
41	51	1NT	S 2 S6	120		-1	41	51	1NT	N-2 HQ	200		-2	41	51	3NT	E 3 S2	600	-4
51	41	2D	E-4 H8	200		2	51	41	2D	E 4 DT	130		0	51	41	3NT	W 3 D9	600	-4
43	47	3NT	S 4 S3	430		7	43	47	2D	E 3 S6	110		1	43	47	3NT	W 3 D5	600	-4
47	43	1NT	S 3 S6	150		0	47	43	3D	E 4 DT	130		0	47	43	3NT	W 3 HT	600	-4

21st NEC CUP Qualifying Round 7 Wednesday, February 08, 2017

7

♠ 54
♥ 10832
♦ J9652
♣ 98

♠ AQJ982 N
♥ AJ4 W
♦ J1063 E
♣

♠ K106
♥ K965
♦ AQ108
♣ 72

♠ 73
♥ Q7
♦ K743
♣ AKQ54

8

♠ AJ83
♥ A1052
♦ 1084
♣ 87

♠ 764 N
♥ Q76 W
♦ K6 E
♣ KJ943 S

♠ KQ952
♥ 843
♦ A73
♣ 106

♠ 10
♥ KJ9
♦ QJ952
♣ AQ52

9

♠ 1074
♥ QJ83
♦ Q104
♣ 762

♠ Q862 N
♥ 542 W
♦ A9 E
♣ AK43 S

♠ K93
♥ A1096
♦ K753
♣ 109

♠ AJ5
♥ K7
♦ J862
♣ QJ85

Board (7) Av: NS=-640

N-S	E-W	Contract	L	N-S	E-W	IMP
1	50 4S	W 5 C9		650	0	
50	1 4S	E 5 CA		650	0	
2	10 4S	W 5 C9		650	0	
10	2 4S	E 5 D2		650	0	
3	4 4S	E 5 CQ		650	0	
4	3 4S	W 5 C9		650	0	
5	28 4S	W 5 C9		650	0	
28	5 4S	E 5 CA		650	0	
6	39 4S	E 5 C9		650	0	
39	6 4S	W 5 C9		650	0	
7	12 4S	W 5 C9		650	0	
12	7 4S	E 5 CA		650	0	
8	25 4S	W 5 H3		650	0	
25	8 4S	W 5 C8		650	0	
9	24 4S	W 5 C9		650	0	
24	9 4S	W 5 C9		650	0	
11	33 4S	W 5 C9		650	0	
33	11 4S	W 5 C9		650	0	
13	34 4S	W 5 C9		650	0	
34	13 3S	W 4 D2	170	10		
14	29 4S	E 5 CA		650	0	
29	14 4S	W 5 C9		650	0	
15	42 4S	W 5 C9		650	0	
42	15 4S	W 5 C9		650	0	
16	23 4S	W 5 C9		650	0	
23	16 4S	E 5 S5		650	0	
17	27 4S	W 5 C9		650	0	
27	17 2S	W 5 C9	200	10		
18	21 4S	W 5 C9		650	0	
21	18 4S	W 5 C9		650	0	
19	48 4S	W 5 C9		650	0	
48	19 4S	W 5 C9		650	0	
20	35 4S	W 4 C9	620	1		
35	20 4S	W 5 C9		650	0	
26	45 4S	W 5 C9		650	0	
45	26 4S	W 6 C9	680	-1		
30	36 4S	W 5 C8		650	0	
36	30 4S	W 5 C9		650	0	
31	46 4S	W 5 C9		650	0	
46	31 4S	W 5 C9		650	0	
32	52 4S	W 5 C9		650	0	
52	32 4S	W 4 C9	620	1		
37	53 4S	W 5 C9		650	0	
53	37 4S	W 5 C9		650	0	
38	44 4S	W 5 C9		650	0	
44	38 4S	W 5 C9		650	0	
40	49 4S	W 5 C9		650	0	
49	40 4S	W 5 C9		650	0	
41	51 4S	W 5 C9		650	0	
51	41 4S	W 5 C9		650	0	
43	47 4S	E 5 CA		650	0	
47	43 4S	W 5 C9		650	0	

Board (8) Av: NS=+20

N-S	E-W	Contract	L	N-S	E-W	IMP
1	50	Passout		100	-1	
50	1 3H	N-2 SK		100	-3	
2	10 3D	N 4 CT	130	3		
10	2 4H	N-2 SK		100	-3	
3	4 3NT	N-2 CT		100	-3	
4	3 2S	E-2 DQ	100	2		
5	28 3D	S-1 S7	50	-2		
28	5 2S	E-1 DQ	50	1		
6	39 3S	E-2 D2	100	2		
39	6 3D	S-2 S6	100	-3		
7	12 3H	N 4 SK	170	4		
12	7 3H	N-3 SK	150	-5		
8	25 3H	N 3 SK	140	3		
25	8 3H	N 3 SK	140	3		
9	24 2Cx	W-1 D4	100	2		
24	9 3H	N-1 SK	50	-2		
11	33 3H	N 4 SK	170	4		
33	11 2S	E 2 DJ	110	-4		
13	34 2NT	N 2 S5	120	3		
34	13	Passout		110	-1	
14	29 3D	S 3 S7	110	3		
29	14 4H	N-2 SK	100	-3		
15	42 2Sx	E-1 ST	100	2		
42	15 3H	S-3 SK	150	-5		
16	23 2S	E-1 DQ	50	1		
23	16 3D	S 3 S4	110	3		
17	27 2S	E-2 H9	100	2		
27	17 2S	E-1 DQ	50	1		
18	22 2S	E-1 H9	50	1		
22	18 3H	N-3 SK	150	-5		
19	48 3D	S 3 S7	110	3		
48	19 3D	S-1 S7	50	-2		
20	35 3H	N 3 CT	140	3		
35	20 3D	S 4 S7	130	3		
26	45 1H	N 1 SQ	80	2		
45	26 3S	E 3 DQ	140	-4		
30	36 2NT	N 2 SK	120	3		
36	30 3S	E-3 DQ	150	4		
31	46 3H	N-2 SK	100	-3		
46	31	Passout		100	-1	
32	52 3H	N-2 CT	100	-3		
52	32 2D	S 4 S7	130	3		
37	53 3NT	N-3 SK	150	-5		
53	37 4H	N-2 SK	100	-3		
38	44 4H	N 4 SK	420	9		
44	38 2S	E-1 DQ	50	1		
40	49 2S	E-2 DQ	100	2		
49	40 2S	E-1 DQ	50	1		
41	51 2D	S 2 S7	90	2		
51	41 2NT	N-3 SQ	150	-5		
43	47 2H	N-1 CT	50	-2		
47	43 4H	N-1 CT	50	-2		

Board (9) Av: NS=-90

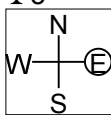
N-S	E-W	Contract	L	N-S	E-W	IMP
1	50 3H	E-2 D6	200	7		
50	1 1NT	E 1 CQ	90	0		
2	10 1H	S-2 CA	100	0		
10	2 2NT	E 2 CQ	120	-1		
3	4 2H	E 3 CQ	140	-2		
4	3 1NT	S-1 S2	50	1		
5	28 1NT	S-1 CA	50	1		
28	5 2NT	E-1 D2	100	5		
6	39 2H	E 2 D6	110	-1		
39	6 2H	E 3 C7	140	-2		
7	12 1NT	S 1 S2	90	5		
12	7 2H	E 2 CQ	110	-1		
8	25 2H	E 3 CQ	140	-2		
25	8 2H	E 2 CQ	110	-1		
9	24 1D	S-1 CA	50	1		
24	9 1NT	E 1 C5	90	0		
11	33 1NT	W 1 C7	90	0		
33	11 1H	E 3 C7	140	-2		
13	34 2H	E 3 D6	140	-2		
34	13 3NT	E 3 C5	600	-11		
14	29 1NT	E 1 D2	90	0		
29	14 2H	E 3 CQ	140	-2		
15	42 2H	E 3 C5	140	-2		
42	15 1NT	E 2 D2	120	-1		
16	23 2H	E 2 CQ	110	-1		
23	16 2NT	E 4 C5	180	-3		
17	27 2H	E 2 D2	110	-1		
27	17 1D	S-1 DA	50	1		
18	22 1H	E 2 CQ	110	-1		
22	18 2C	W-1 HQ	100	5		
19	48 1NT	E 2 C5	120	-1		
48	19 1NT	E 2 C5	120	-1		
20	35 2H	E 2 CQ	110	-1		
35	20 1NT	E 3 C5	150	-2		
26	45 2H	E 2 CQ	110	-1		
45	26 2H	E 2 CQ	110	-1		
30	36 1NT	S 1 S2	90	5		
36	30 1H	E 3 D6	140	-2		
31	46 2H	E 3 CQ	140	-2		
46	31 1NT	E 3 C6	150	-2		
32	52 2H	E 3 CQ	140	-2		
52	32 1D	S-1 CA	50	1		
37	53 1D	S 1 CA	70	4		
53	37 1NT	S 1 H5	90	5		
38	44 3S	W 3 D4	140	-2		
44	38 1S	S-2 H2	100	0		
40	49 1NT	E 2 C5	120	-1		
49	40 2NT	E 3 C5	150	-2		
41	51 1NT	S-1 S2	50	1		
51	41 1H	W 3 C5	140	-2		
43	47 1NT	S-1 S6	50	1		
47	43 1NT	W 1 C8	90	0		

21st NEC CUP Qualifying Round 7 Wednesday, February 08, 2017

10

♠K10954
♥AK9732
♦10
♣5

♠32
♥6
♦J9743
♣A10987



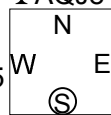
♠J86
♥QJ5
♦AK65
♣Q62

♠AQ7
♥1084
♦Q82
♣KJ43

11

♠AJ1083
♥8
♦K4
♣AQJ84

♠74
♥72
♦A10765
♣K975



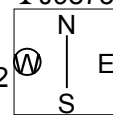
♠K92
♥QJ653
♦QJ8
♣102

♠Q65
♥AK1094
♦932
♣63

12

♠65
♥Q10
♦Q5
♣J987532

♠A74
♥K973
♦AK1062
♣Q



♠KQJ3
♥AJ86
♦973
♣A6

♠10982
♥542
♦J84
♣K104

Board (10) Av: NS=+600

Board (11) Av: NS=+430

Board (12) Av: NS=-880

Board (10) Av: NS=+600				Board (11) Av: NS=+430				Board (12) Av: NS=-880							
N-S	E-W	Contract	L	N-S	E-W	IMP		N-S	E-W	Contract	L	N-S	E-W	IMP	
1	50	4S	S 4 H6	620	1	1		1	50	6H	E 6 ST	980		-3	
50	1	4H	N 4 DA	620	50	1	4S	N 4 CT	420	50	1	6H	W 6 C2	980	-3
2	10	4H	N 4 DA	620	2	10	4S	N 4 CT	420	2	10	6H	W 6 S6	980	-3
10	2	4H	N 4 DK	620	10	2	4S	N 5 HQ	450	10	2	6H	E 6 C2	980	-3
3	4	4H	N 4 DA	620	3	4	4S	N 5 DQ	450	3	4	6H	W 6 C2	980	-3
4	3	4H	N 4 DK	620	4	3	4S	N 5 HQ	450	4	3	6H	E 6 ST	980	-3
5	28	4H	N 5 DA	650	5	28	4S	S 5 C5	450	5	28	6H	W 6 S5	980	-3
28	5	4H	S 4 CA	620	28	5	4S	N 4 CT	420	28	5	6H	E 6 C4	980	-3
6	39	5Dx	E-3 HA	800	6	39	2H	N 4 CT	170	6	39	6H	E 6 ST	980	-3
39	6	4H	S 4 CA	620	39	6	4S	N 4 DQ	420	39	6	4H	E 6 ST	480	9
7	12	4S	S 4 H6	620	7	12	4S	N 5 DQ	450	7	12	6H	E 6 ST	980	-3
12	7	4S	S 4 H6	620	12	7	4S	N 5 DQ	450	12	7	4H	W 6 S6	480	9
8	25	4H	N 4 DK	620	8	25	4S	N 5 CT	450	8	25	6H	E 6 ST	980	-3
25	8	4S	S 4 H8	620	25	8	4S	N 5 HQ	450	25	8	6D	W-1 S8	50	14
9	24	4H	S 4 D3	620	9	24	4S	N 5 HQ	450	9	24	6H	E 6 ST	980	-3
24	9	4H	S 4 D2	620	24	9	4S	N 4 DQ	420	24	9	6H	E 6 C2	980	-3
11	33	4S	S 4 H6	620	11	33	4S	N 4 CT	420	11	33	6H	W 6 C5	980	-3
33	11	4H	N 4 DK	620	33	11	4S	N 5 HQ	450	33	11	6H	E 6 C2	980	-3
13	34	3S	S 4 H6	170	13	34	4S	N 6 HQ	480	13	34	6H	W 6 C9	980	-3
34	13	4H	N 4 DA	620	34	13	4S	N 5 HQ	450	34	13	6D	W 6 C8	920	-1
14	29	4H	N 4 DA	620	14	29	4S	N 5 DQ	450	14	29	6H	E 6 ST	980	-3
29	14	4H	N 4 DA	620	29	14	4S	N 5 HQ	450	29	14	4H	W 6 C7	480	9
15	42	4S	S 4 H6	620	15	42	4S	N 4 H4	420	15	42	6H	E 6 C3	980	-3
42	15	4H	N 4 DK	620	42	15	4S	N 4 DK	420	42	15	6H	E 6 ST	980	-3
16	23	4S	N 5 DA	650	16	23	4S	N 5 HQ	450	16	23	6H	E-1 ST	50	14
23	16	4H	N 4 DA	620	23	16	4S	N 5 S2	450	23	16	6H	E 6 ST	980	-3
17	27	4S	S 4 H6	620	17	27	4S	N 5 DQ	450	17	27	6H	E 6 H2	980	-3
27	17	4S	S 4 H6	620	27	17	4S	N 5 CT	450	27	17	4H	E 5 ST	450	10
18	22	4H	N 4 DK	620	18	22	4S	N 5 HQ	450	18	22	6H	E 6 ST	980	-3
22	18	4S	S 5 DA	650	22	18	4S	N 5 H5	450	22	18	5H	E 6 ST	480	9
19	48	4H	N 4 DA	620	19	48	4S	N 5 CT	450	19	48	6H	E-1 ST	50	14
48	19	3Dx	E-2 C5	500	48	19	4S	N 4 HQ	420	48	19	6H	E 6 ST	980	-3
20	35	4H	N 4 DA	620	20	35	4S	N 4 HQ	420	20	35	6H	E 6 ST	980	-3
35	20	4S	S 4 H6	620	35	20	2Hx	E-4 S5	800	35	20	6H	E 6 S9	980	-3
26	45	4S	S 5 CA	650	26	45	4S	N 5 DJ	450	26	45	6H	E 6 ST	980	-3
45	26	4S	S 4 H4	620	45	26	4S	N 4 HQ	420	45	26	6H	E 6 ST	980	-3
30	36	4S	S 4 H6	620	30	36	4S	N 5 HQ	450	30	36	6H	E 6 ST	980	-3
36	30	4S	S 4 H6	620	36	30	4S	N 5 HQ	450	36	30	6H	W 7 C8	1010	-4
31	46	4H	N 4 DA	620	31	46	4S	N 5 HQ	450	31	46	6H	W 6 C7	980	-3
46	31	4H	N 4 DA	620	46	31	4S	N 5 CT	450	46	31	6H	E 6 ST	980	-3
32	52	4H	N 4 DK	620	32	52	4S	N 4 CT	420	32	52	6H	W 6 S6	980	-3
52	32	4H	N 4 DK	620	52	32	4S	N 5 CT	450	52	32	6H	E 6 ST	980	-3
37	53	4S	S 5 D3	650	37	53	4S	N 5 HQ	450	37	53	6H	E 6 S9	980	-3
53	37	5H	N-1 DK	100	53	37	4S	N 5 HQ	450	53	37	6H	E 6 C4	980	-3
38	44	4H	S 4 D6	620	38	44	4S	N 4 HQ	420	38	44	6H	E 6 ST	980	-3
44	38	5Dx	E-4 SA	1100	44	38	4S	N 5 DQ	450	44	38	6H	W 6 C2	980	-3
40	49	5S	S-1 CA	100	40	49	4S	N 4 CT	420	40	49	6H	E 6 ST	980	-3
49	40	4S	S 5 D3	650	49	40	3NT	S-1 H7	50	49	40	6H	E 6 ST	980	-3
41	51	4S	S 4 H6	620	41	51	4S	N 4 HQ	420	41	51	6H	W 6 C9	980	-3
51	41	4H	S 4 D3	620	51	41	4S	N 4 S2	420	51	41	4H	E 5 ST	450	10
43	47	4S	S 4 H6	620	43	47	4S	N 5 CT	450	43	47	6H	E 6 CT	980	-3
47	43	4S	S 4 H6	620	47	43	4S	N 5 DQ	450	47	43	6H	E 6 ST	980	-3

13

♠A5
♥876
♦973
♣AJ865

♠8
♥A109532
♦AJ8
♣742

♠J1097643
♥QJ
♦Q5
♣K10

♠KQ2
♥K4
♦K10642
♣Q93

Board (13) Av: NS=-150

N-S	E-W	Contract	L	N-S	E-W	IMP
1	50	2S	E 3 D4	140	0	0
50	1	2S	E 3 D2	140	0	0
2	10	2S	E 3 HK	140	0	0
10	2	3D	S-1 S8	100	2	2
3	4	2S	W 3 H8	140	0	0
4	3	2S	E 4 D4	170	-1	-1
5	28	2S	W 3 D2	140	0	0
28	5	3S	E 3 C3	140	0	0
6	39	3S	E 3 C3	140	0	0
39	6	3D	S-1 S5	100	2	2
7	12	2S	E 3 C3	140	0	0
12	7	2S	E 3 C3	140	0	0
8	25	2S	E 4 D2	170	-1	-1
25	8	2S	W 3 H8	140	0	0
9	24	2S	E 3 HK	140	0	0
24	9	2S	E 3 C2	140	0	0
11	33	2S	W 3 D3	140	0	0
33	11	2S	E 3 D2	140	0	0
13	34	2H	W 4 D3	170	-1	-1
34	13	3D	S-1 S8	100	2	2
14	29	2S	E 3 D2	140	0	0
29	14	2S	E 3 D2	140	0	0
15	42	2C	N-2 HQ	200	-2	-2
42	15	2S	E 3 D4	140	0	0
16	23	2S	E 3 D2	140	0	0
23	16	3S	E 4 D4	170	-1	-1
17	27	3S	E 3 DT	140	0	0
27	17	2H	W 4 D7	170	-1	-1
18	22	2S	E 3 D4	140	0	0
22	18	3S	E-1 C3	100	6	6
19	48	2H	W 3 D9	140	0	0
48	19	2S	W 3 D3	140	0	0
20	35	2S	E 3 C3	140	0	0
35	20	3S	E 3 D2	140	0	0
26	45	3H	W 4 D3	170	-1	-1
45	26	2S	E 3 C3	140	0	0
30	36	3C	N-3 HQ	300	-4	-4
36	30	2S	E 3 C3	140	0	0
31	46	3C	N-2 HQ	200	-2	-2
46	31	2S	E 4 C6	170	-1	-1
32	52	3D	S-1 S8	100	2	2
52	32	3D	S-1 S8	100	2	2
37	53	3S	E 3 D2	140	0	0
53	37	2H	W 4 D3	170	-1	-1
38	44	2S	E 4 D2	170	-1	-1
44	38	2S	E 3 HK	140	0	0
40	49	3H	W 4 D9	170	-1	-1
49	40	2S	E 3 D2	140	0	0
41	51	3NT	S-3 HT	300	-4	-4
51	41	3D	S-2 S8	200	-2	-2
43	47	2H	W 3 D3	140	0	0
47	43	2S	E 3 C3	140	0	0

14

♠AQ4
♥K5
♦QJ4
♣AQ962

♠972
♥73
♦AK10873
♣87

♠J53
♥J8642
♦65
♣K105

♠K1086
♥AQ109
♦92
♣J43

Board (14) Av: NS=+370

N-S	E-W	Contract	L	N-S	E-W	IMP
1	50	4H	N-1 D6	50	-9	-9
50	1	2Sx	W-4 DQ	800	10	10
2	10	4NT	S 4 DA	430	2	2
10	2	3NT	S 3 D2	400	1	1
3	4	3NT	S 4 DA	430	2	2
4	3	3NT	N 3 D6	400	1	1
5	28	3NT	N 3 D6	400	1	1
28	5	3NT	N 3 D6	400	1	1
6	39	3NT	N 4 D6	430	2	2
39	6	3NT	N 3 D6	400	1	1
7	12	3NT	N-2 D6	100	-10	-10
12	7	3NT	N 3 D6	400	1	1
8	25	3NT	N 3 D6	400	1	1
25	8	3NT	N 3 D6	400	1	1
9	24	3NT	N 3 D6	400	1	1
24	9	3NT	N 4 D6	430	2	2
11	33	3NT	N 3 D6	400	1	1
33	11	3NT	N 3 D6	400	1	1
13	34	3NT	N 3 D6	400	1	1
34	13	3NT	N 4 D8	430	2	2
14	29	3NT	N 3 D6	400	1	1
29	14	3NT	N 3 D6	400	1	1
15	42	3NT	N 3 D6	400	1	1
42	15	3NT	N 3 D6	400	1	1
16	23	3NT	N 4 D6	430	2	2
23	16	3NT	N 5 D6	460	3	3
17	27	3NT	N 3 D6	400	1	1
27	17	5C	S-1 DA	50	-9	-9
18	22	3NT	N 6 S5	490	3	3
22	18	3NT	N 5 D6	460	3	3
19	48	3NT	N 3 D6	400	1	1
48	19	3NT	N 4 D6	430	2	2
20	35	5C	N-1 D6	50	-9	-9
35	20	3NT	N 5 H3	460	3	3
26	45	3NT	N 5 D6	460	3	3
45	26	3NT	N 3 D6	400	1	1
30	36	3NT	N 4 D6	430	2	2
36	30	3NT	N 3 D6	400	1	1
31	46	3NT	N 3 D6	400	1	1
46	31	3NT	N 5 D6	460	3	3
32	52	4H	S-1 DK	50	-9	-9
52	32	3NT	N 4 D6	430	2	2
37	53	3NT	N 3 D6	400	1	1
53	37	5S	N-1 D6	50	-9	-9
38	44	3NT	N 3 D6	400	1	1
44	38	3NT	N 5 D6	460	3	3
40	49	3NT	N 4 D6	430	2	2
49	40	3NT	N 4 D6	430	2	2
41	51	3NT	N 3 D6	400	1	1
51	41	3NT	N 4 S3	430	2	2
43	47	3NT	N 3 D6	400	1	1
47	43	3NT	N 3 D6	400	1	1

36

♠AK
♥A52
♦Q1085
♣AJ87

♠107542
♥863
♦AK6
♣63

♠6
♥KQ74
♦972
♣KQ1042

♠QJ983
♥J109
♦J43
♣95

Board (36)

N-S	E-W	Contract	L	N-S	E-W	IMP
21	22	3NT	N-1 CK	100		
22	21	2NT	N-1 H4	100		

37

♠ K43
♥ K543
♦ 853
♣ 1043

♠ 1086
♥ 109
♦ KQJ102
♣ QJ2

	N	
W		E
	S	

♠ QJ7
♥ AJ86
♦ A74
♣ K98

♠ A952
♥ Q72
♦ 96
♣ A765

Board (37)

N-S	E-W	Contract	L	N-S	E-W	IMP
21	22	3NT	E 3 S2		400	
22	21	3NT	E-1 S2	50		

38

♠ KJ864
♥ 3
♦ K984
♣ AQ5

♠ A2
♥ J542
♦ A73
♣ J643

	N	
W		E
	S	

♠ Q10975
♥ K1076
♦ 1052
♣ 8

♠ 3
♥ AQ98
♦ QJ6
♣ K10972

Board (38)

N-S	E-W	Contract	L	N-S	E-W	IMP
21	22	3NT	S 3 H2	400		
22	21	3NT	S 3 D3	400		

39

♠ Q75
♥ J63
♦ K43
♣ J874

♠ K9864
♥ 7
♦ 10986
♣ Q52

	N	
W		E
	S	

♠ AJ102
♥ Q1052
♦ J7
♣ A63

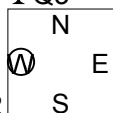
♠ 3
♥ AK984
♦ AQ52
♣ K109

Board (39)

N-S	E-W	Contract	L	N-S	E-W	IMP
21	22	4H	S-3 S5	300		
22	21	3H	S-1 DT	100		

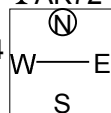
40

♠ 52
 ♥ KJ865
 ♦ Q954
 ♣ Q3
 ♠ K108
 ♥ 3
 ♦ A632
 ♣ K8642
 ♠ J964
 ♥ Q97
 ♦ 108
 ♣ AJ109
 ♠ AQ73
 ♥ A1042
 ♦ KJ7
 ♣ 75



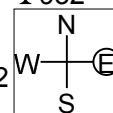
41

♠ A6
 ♥ QJ
 ♦ KQ942
 ♣ AK72
 ♠ J92
 ♥ A654
 ♦ J853
 ♣ 86
 ♠ 54
 ♥ K873
 ♦ 76
 ♣ QJ1043
 ♠ KQ10873
 ♥ 1092
 ♦ A10
 ♣ 95



42

♠ 876532
 ♥ 85
 ♦ 65
 ♣ 932
 ♠ J94
 ♥ K
 ♦ AK432
 ♣ A874
 ♠ K10
 ♥ AJ10764
 ♦ J
 ♣ QJ65
 ♠ AQ
 ♥ Q932
 ♦ Q10987
 ♣ K10



Board (40)

N-S	E-W	Contract	L	N-S	E-W	IMP
21	22	2H	N 2 S6	110		
22	21	3C	E 5 S5		150	

Board (41)

N-S	E-W	Contract	L	N-S	E-W	IMP
21	22	4S	S 5 C8	450		
22	21	4S	S 5 C8	450		

Board (42)

N-S	E-W	Contract	L	N-S	E-W	IMP
21	22	4H	E-2 DT	200		
22	21	3NT	W 5 S5		660	